



St Elmo , Ambler Thorn, Queensbury, BD13 2DT 1 bedroom flat / apartment available now £595 pcm

A spacious 1 bedroom 1st floor flat in a sought after location on bus routes to Halifax, Queensbury and Bradford. Benefiting from Gas central heating and double glazing. Briefly comprises of Living Room, Kitchen, Bedroom and Bathroom.



Ryefield House, 180 Highgate Road, Bradford, BD13 1DS
info@patchett-homes.co.uk

01274 882331

Opening Times

Mon 09.00 - 17.00; Tues 09.00 - 17.00
Wed 09.00 - 17.00; Thurs 09.00 - 17.00

St Elmo, , Ambler Thorn, Queensbury, BD13 2DT

BATHROOM - 3.87m (12'9") x 2.29m (7'7")
A three piece bathroom suite comprising of bath with electric shower over, wash hand basin and W.C. Part tiled with extractor fan. Central heating radiator.



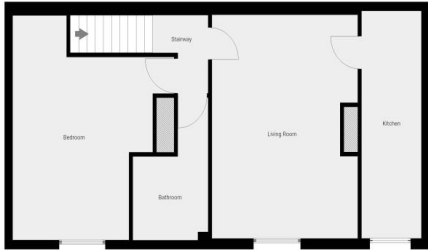
BEDROOM - 6.09m (20'0") x 4.92m (16'2")
Spacious bedroom with Double glazed window tot eh side elevation. Central heating radiator.



KITCHEN - 6.17m (20'3") x 1.82m (6'0")
A fitted kitchen in white with marble effect work surfaces. Integral oven with gas hob and extractor over. Inset sink and drainer. Central heating radiator. Double glazed window to the side elevation.

LIVING ROOM - 6.06m (19'11") x 4.44m (14'7")
A spacious lounge with electric fire set in a feature surround. Double glazed window to the side elevation. Central heating radiator.

DIRECTIONS:

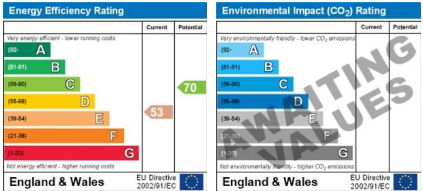


Rental Procedure

Call the office to arrange a viewing of the property. If you wish to apply for the property, complete the application form and return to our offices. There is no fee to apply and no fee if your application is chosen to proceed.

This home's performance is rated in terms of the energy use per square metre of floor area, energy efficiency based on fuel costs and environmental impact based on carbon dioxide (CO2) emissions.

The energy efficiency rating is a measure of the overall efficiency of a home. The higher the rating the more energy efficient the home is and the lower the fuel bills will be.



Property Ref: inst-4508

Creation Date: 16/07/2025

IMPORTANT INFORMATION
For clarification, we wish to inform the prospective tenant that we have prepared these details as a general guide. The agent has not carried out a detailed survey nor tested the services, appliances, or specific fittings (unless otherwise stated), and no warranty can be given as to their condition. All room measurements are taken at floor level. We strongly recommend that all the information which we provide about the property is verified by yourself and your advisers. The contents of this publication are © Patchett Homes Ltd, 2025. Patchett Homes Ltd Registered in England and Wales No. 08512191